

# Helco Group



# Table of Contents

1. Our company
2. Services
  - a) Expertise
  - b) Equipments
  - c) Examples of products
  - d) Examples of final products
  - e) Cost-free services
3. Our customers
4. Contact

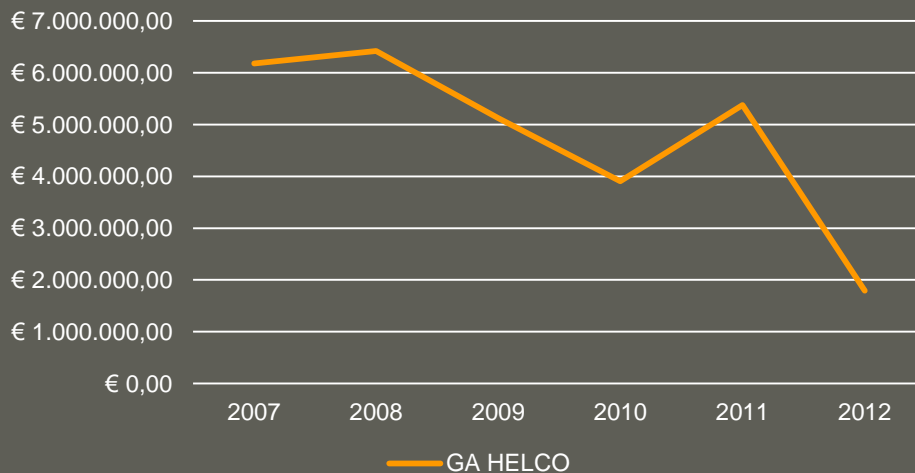
# Our Company

- Helco is a company that has evolved on the romanian market since 1991. Starting with 2004, a new branch has been developed for the metal processing industry .
- The metal processing department began in 2004 because of the company's plans to extend to equipment manufacturing.
- The turnover of the company in 2007 was 5.5 mil € out of which 20% was due to metal processing.

# Our Company

- In 2011 the company had a strategic split in order to have a better management over divisions.

Turnover HELCO



Number of Successful Deliveries of HPD



Since 2005

# Our Company

Abkant

Our factory



Laser cutting machine

# Our Company

Our new facility



One of the entrance



Main hall



# Our Company

- It employs 35 people specialized and involved in metal processing, 15 of them are technicians and 6 are engineers.
- Helco offers a friendly environment in which you can promote your interests, through its partnership policy, continuous information and collaboration in a diverse range of projects.
- 2 production sites:
  - a 10,000sq hall situated in the NE of Craiova
  - a 12,000 sq hall situated in the S of Craiova ( opposite the Ford factory )

# Our Company

- Active collaborations with international clients for the metal processing industry
- High quality suppliers for steel
- A wide assortment of products manufactured
- An open partnership policy aimed at collaboration and continuous transfers of information for diverse range of projects.



# Services

A) We pride ourselves with expertise in :

- *Laser cutting*
- *Shearing (width max: 3000mm)*
- *Bending (width max: 3000mm )*
- *Welding*
- *Turnery*
- *Assembling of mechanical and/or electronic*

# Services

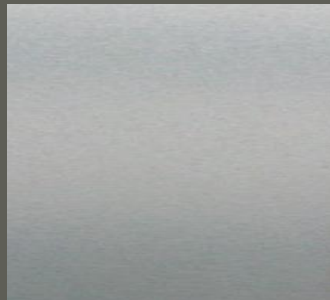
Raw Materials we stock for production:

- **Stainless steel AISI 304**
- **Stainless steel AISI 430**
- **Mild steel St37**
- **Aluminum 1050**
- **Galvanized steel**

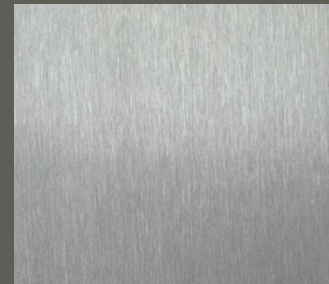
\* Different surface finished can be opted for



2B or matte



Scotch brite K400



# Services

## B) Our equipments:

*TRUMATIC TRUMPF Laser Cutting ;*



*ABKANT TRUMABED TRUMPF ;*



*TRUMACUT TRUMPF Cutting Machine.*



# Services

## B) Our equipments:

*MIG-MAG WELDING*

*VIG WELDING*

*TIG WELDING*

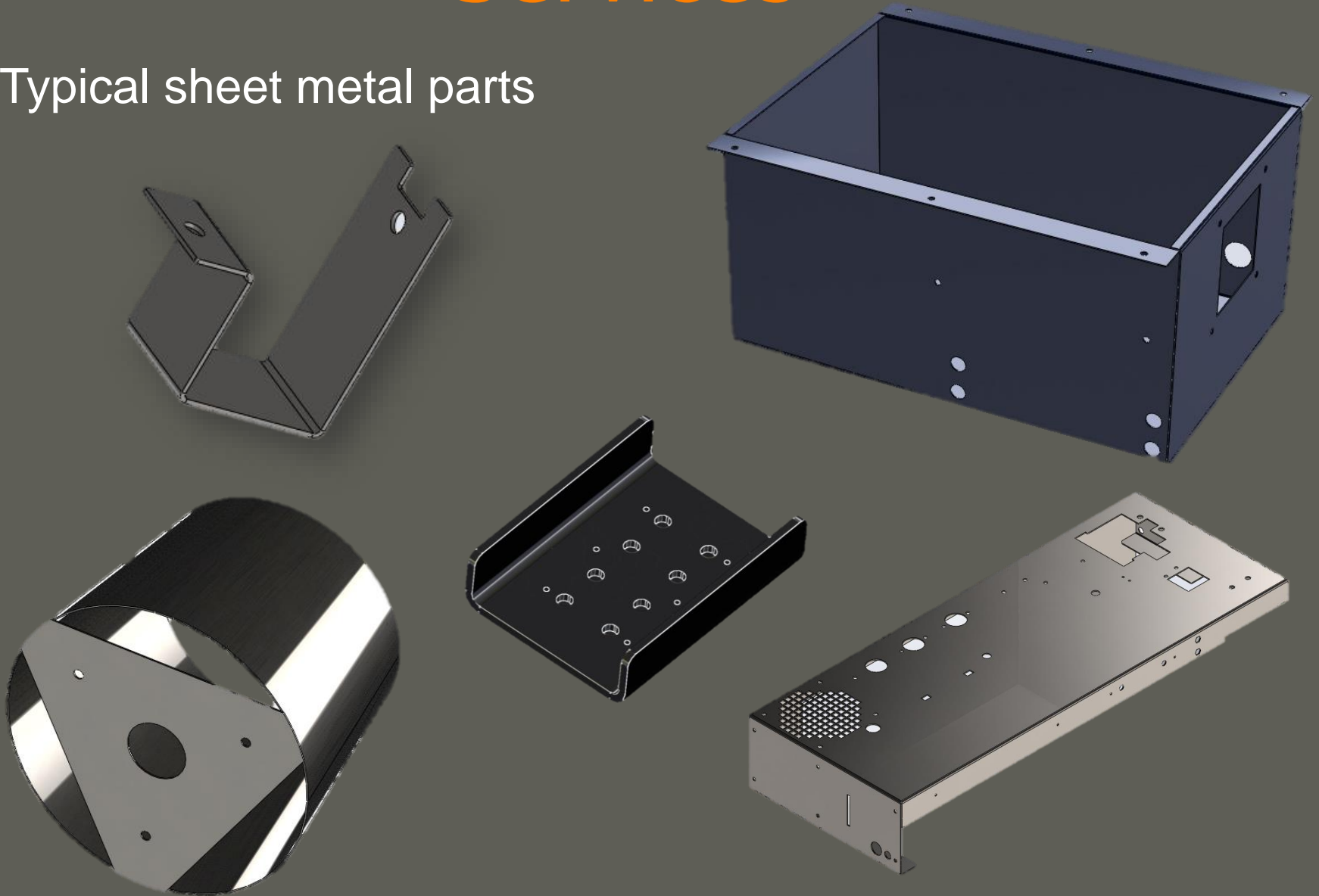
*POINT WELDING*

All types of welding on stainless steel or basic steel , with equipments from producers like ESAB , REHM, FRONIUS



# Services

## c) Typical sheet metal parts

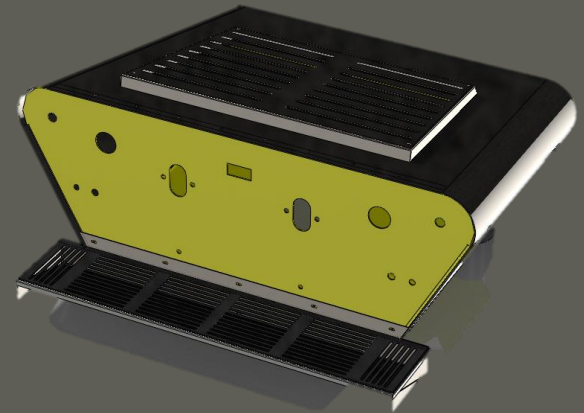


# Services

## D) Exemples of final products



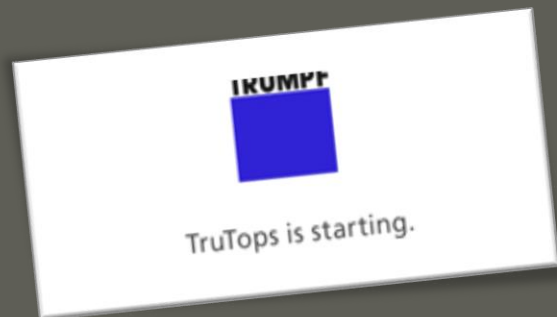
Ovens



# Services

## E) Cost-free services :

- *Computer aided design with SolidWorks , TruTops, Autocad programs*
- *The check and correction of the initial projects offered by the client*
- *Optimized sheet metal loading*





# Some of our customers

- *Industrial Electronic Devices :*  
ICMET CRAIOVA  
CUMMINS GENERATOR
- *Railways Industry :*  
ELECTROPUTERE CRAIOVA  
COMPANIA DE MECANICA FERROVIARA CRAIOVA
- *Airplane Industry :*  
AVIOANE CRAIOVA
- *Motor-reparing industry :*  
EASY FACTORY ITALIA  
FI PROCESS ITALIA
- *Other Industries :*  
SECALT S.A LUXEMBOURG.  
MICAR SRL  
AMPERA GAMES  
FRILABOR  
BOAT COMPANY



# Contact

- Helco Group **Romania**  
Craiova

bd.Decebal 23,200038

tel: 0040-251-410400

fax: 0040-251-418655

e-mail: [office@helco.ro](mailto:office@helco.ro)  
[contact@helco.ro](mailto:contact@helco.ro)

site: <http://www.helco.ro/>

Thank You!